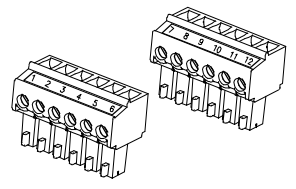
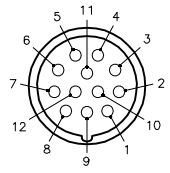


FEMALE END VIEW (J1)

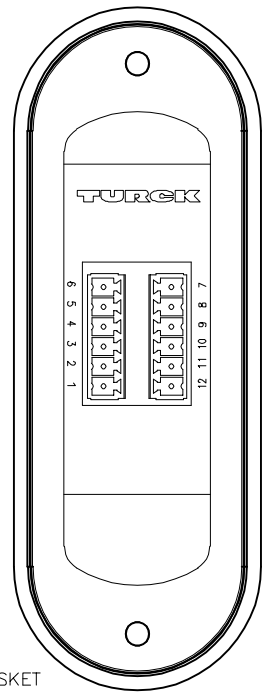
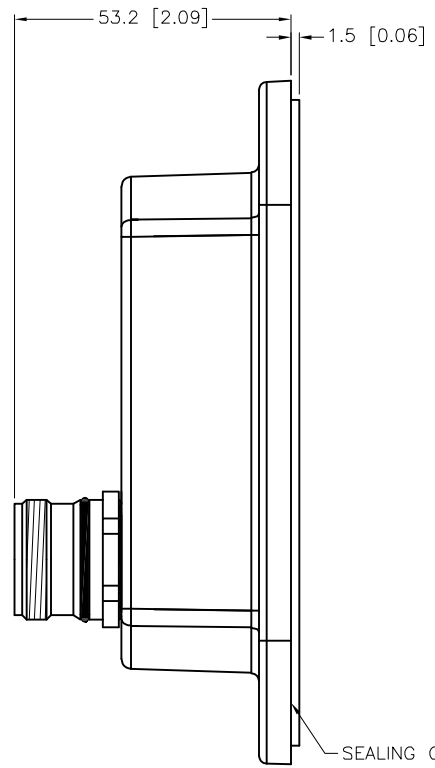
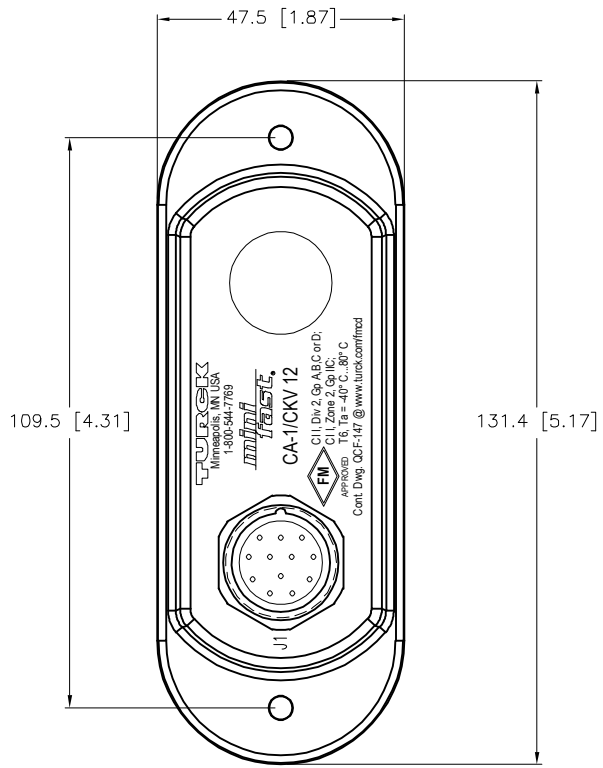
TERMINAL BLOCK PLUGS



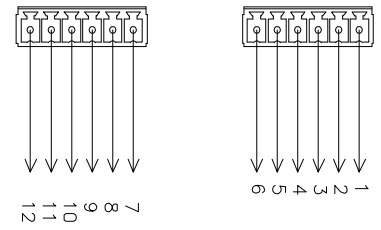
M23 connector

SPECIFICATIONS

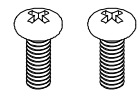
HOUSING MATERIAL/COLOR	NYLON 66 - 33% GLASS FILLED/BLACK
CONTACT CARRIER/COLOR	PBT OR NYLON/WHITE
CONTACT MATERIAL/PLATING	BRASS/GOLD
RECEPTACLE HOUSING MATERIAL/FINISH	STAINLESS STEEL/PASSIVATED
OPERATING VOLTAGE	300 V
OPERATING CURRENT	4.0 A
PROTECTION CLASS to DIN 40050	IP 67 - ONLY WHEN ALL RECEPTACLES ARE COVERED WITH PLUGS OR CONNECTED
OPERATING TEMPERATURE	-30°C to +80°C (-22°F to +176°F)



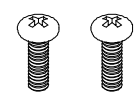
WIRING DIAGRAM



COVER SCREWS INCLUDED



FORM 8 CONDUIT BODIES:
10-24 SCREWS



MARK 9 CONDUIT BODIES:
8-32 SCREWS

SOURCE DRAWING - FOR REFERENCE ONLY

RELATED DOCUMENTS 1. 2. 3. 4.	3RD ANGLE PROJECTION 	THIS DRAWING IS CONFIDENTIAL AND THE PROPERTY OF TURCK INC. USE OF THIS DOCUMENT WITHOUT WRITTEN PERMISSION IS PROHIBITED.		3000 CAMPUS DRIVE MINNEAPOLIS, MN 55441 1-800-544-7769 (763) 553-7300 (763) 553-0708 fax www.turck.us
	MATERIAL	DRFT DD APVD	DATE 04/14/05 SCALE 1=1.5	
FINISH	ALL DIMENSIONS DISPLAYED ON THIS DRAWING ARE FOR REFERENCE ONLY CONTACT TURCK FOR MORE INFORMATION	UNIT OF MEASUREMENT MILLIMETER [INCH]		IDENTIFICATION NO. U2-03750
F UPDATE CLICHE	NF 10/21/25 81452	DO NOT SCALE THIS DRAWING		REV F
REV DESCRIPTION	BY DATE ECO NO.	FILE: U2-03750		SHEET 1 OF 1

